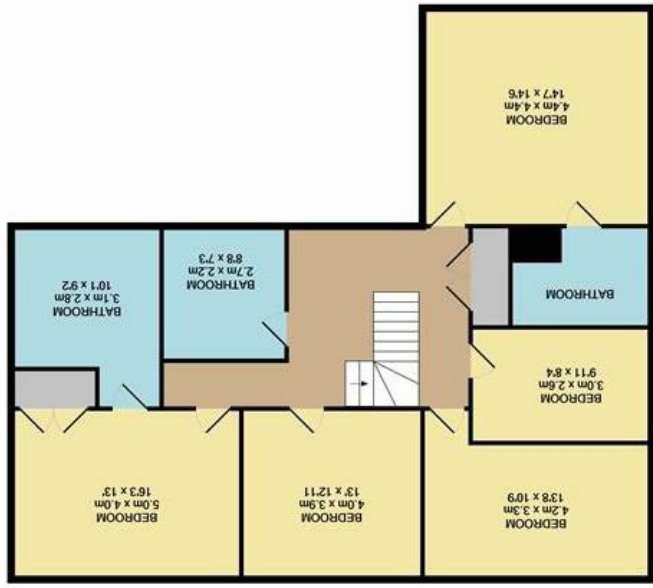


1st FLOOR  
 APPROX. FLOOR AREA 134.1 SQ.M. (1444 SQ.FT.)  
 TOTAL APPROX. FLOOR AREA 292.6 SQ.M. (3148 SQ.FT.)  
 These views are intended to provide a general impression of the proposed development. They are not to be taken as a guarantee of any particular features or details. The views are subject to change without notice. The views are not to be taken as a guarantee of any particular features or details. The views are subject to change without notice.



GROUND FLOOR  
 APPROX. FLOOR AREA 158.4 SQ.M. (1705 SQ.FT.)



Disclaimer – In accordance with the Property Misdescriptions Act, the company gives notice that all descriptions, references to condition, necessary permissions for use and other details are given in good faith and believed to be correct, but any intending lessees do not rely on them as statements of fact, but must satisfy themselves by inspection or other means, as to their accuracy.

England & Wales	
EU Directive 2002/91/EC	
Very energy efficient - lower running costs	(92 plus) A
	(81-91) B
	(69-80) C
	(55-68) D
	(39-54) E
	(21-38) F
Not energy efficient - higher running costs	(1-20) G
Current	Potential

Energy Efficiency Rating



Oak View Grove | Wymondham | NR18  
 Guide Price £725,000 - £750,000





abbotFox Land & New Homes presents this outstanding house within Oak View, a remarkable new gated development neatly positioned on the edge of the popular South Norfolk market town of Wymondham.

This small collection of just five sophisticated, individually designed family homes offer exceptional levels of specification throughout. Carefully considered architectural plans have been devised to grant fantastic contemporary layouts complemented by an abundance of natural light.

Accommodation comprises; reception hall, cloakroom, study, sitting room with wood burning stove, central kitchen with dining room and family room either side (the family room features bi-folding doors to the rear), a utility room, five first floor bedrooms, the principle and guest bedrooms featuring en suites and a separate family bathroom. There is a double garage with electric doors.

In all the plot extends to approximately 0.2 acres (stms).

